



Michelle "Shell Bell" Renee Hosey

November 9, 1964 - August 2, 2025

Michelle "Shell Bell" Renee Hosey, age 60, of Calumet, Michigan, died on August 2, 2025, at Omega House Hospice Facility in Houghton . She was born on November 9, 1964, in San Angelo, Texas, to Joseph and JoAnn (Eliassen) Hosey.

Michelle grew up in Trout Lake Township, Michigan. She was a proud graduate of Rudyard High School, Class of 1983. The birth of her daughter Rose in 1987 was a great joy to Michelle. Michelle moved to Petoskey, Michigan, where she worked for a short time as a cashier at Olsen's, where she attended many bible studies and prayer groups. Michelle's Scoliosis, back injury, and many surgeries profoundly impacted her life.

Michelle was a member of Sacred Heart Catholic Church in Champion, Michigan, where she found strength in her Catholic faith. She had a passion for life's simple pleasures, including crochet, music, and poetry. She loved playing the guitar, drawing, and watching movies, with Dirty Dancing being a favorite. Michelle also cherished dancing, playing cards, especially the card game Tonk (which her grandmother taught her), and spending time with her family. She will be remembered for her strength, silly pun lines that would come out of nowhere and for always telling her family "Don't forget I love you."

Michelle is survived by her daughter, Rose Cote; sister, Marcee (Jim) Kargol;

brother, Jim Hosey; sister, Melissa (Brad) Gustafson; and many nieces, nephews, aunts, uncles, and friends.

Michelle was preceded in death by her parents, Joseph and JoAnn; and infant brother, John Michael Hosey.

Memorial contributions in Michelle's honor may be made to an organization of your choice, reflecting her spirit of generosity and compassion.

Family Life Funeral Homes – St. Ignace assisted the family with arrangements. Condolences may be left to the family at www.familylifefh.com.

Cemetery Details

Trout Lake Lakeview Cemetery

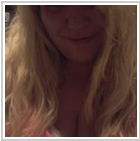
Moran, MI 49760

Tribute Wall

TB

“ I had the privilege of spending time with Michelle near the end of her life. Her room was full of yarn and she constantly had mass running on the TV in her room. I brought her some super soft yarn I had at my house and she smiled pointing to a drawer. She had the same yarn already in a different color. She loved when her daughter ce to visit and brought her sweet dog with her. I was fortunate to hold her hand and share a prayer. I hope you found your peace. You are missed and you are loved.

Trish Bennett - September 05, 2025 at 11:32 PM



“ Kim Eliassen lit a candle in memory of Michelle "Shell Bell" Renee Hosey



Kim Eliassen - August 12, 2025 at 04:25 PM